



**8.8%**

Percent of total investigations involving families with Black children



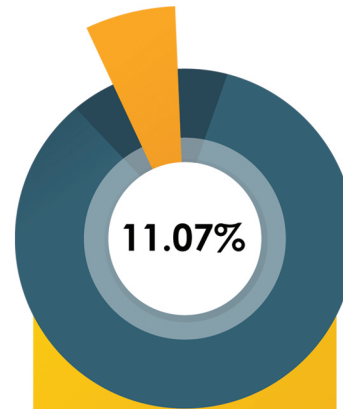
**12.6%**

Percent of Black children who received service



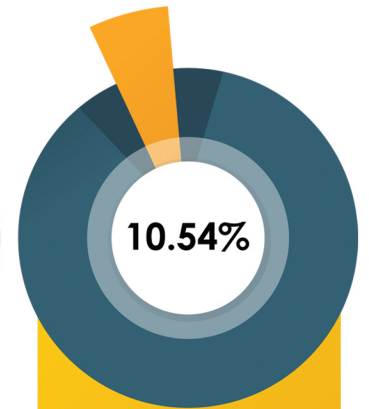
**13.7%**

Percent of Black children involved in investigations



Durham Region

Black child/youth population  
(2016 census)



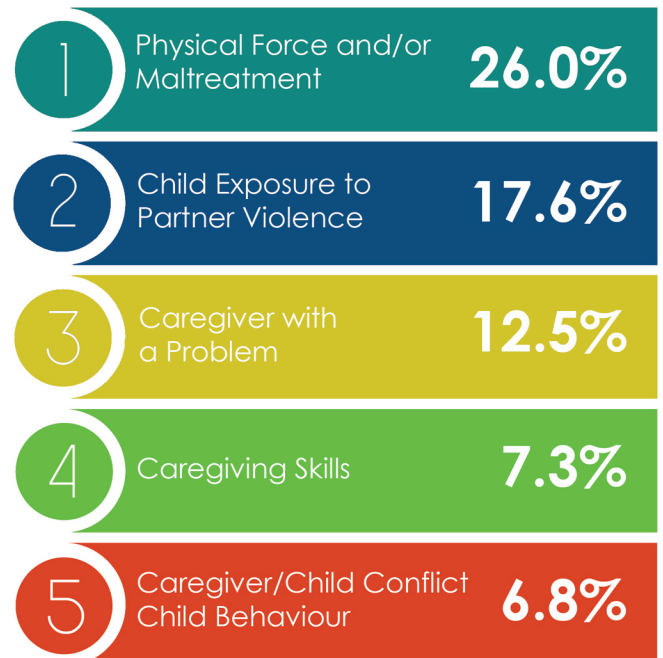
Durham CAS

Black children/youth in care  
(March 31, 2019)

## Top 5 Reasons for Service for all Families



## Top 5 Reasons for Service for Families with Black Children



Service data/percentages calculated based on data collected between April 1, 2018 - March 31, 2019  
Census data and child/youth in care age range used is 0-19 years



indicates a new statistic for 2019 Building Bridges Consultation



## Main Referral Sources All Demographics

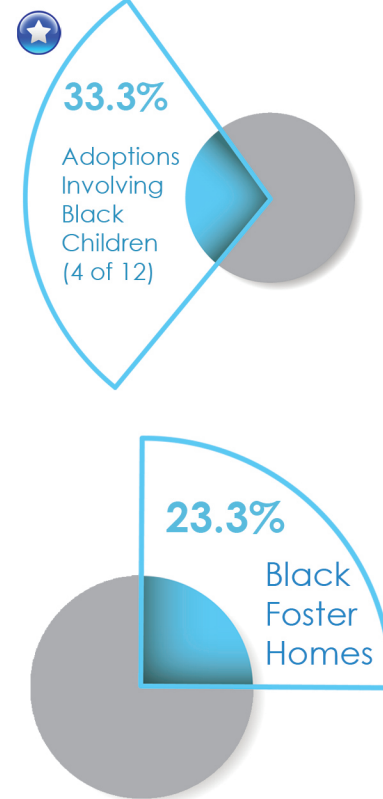
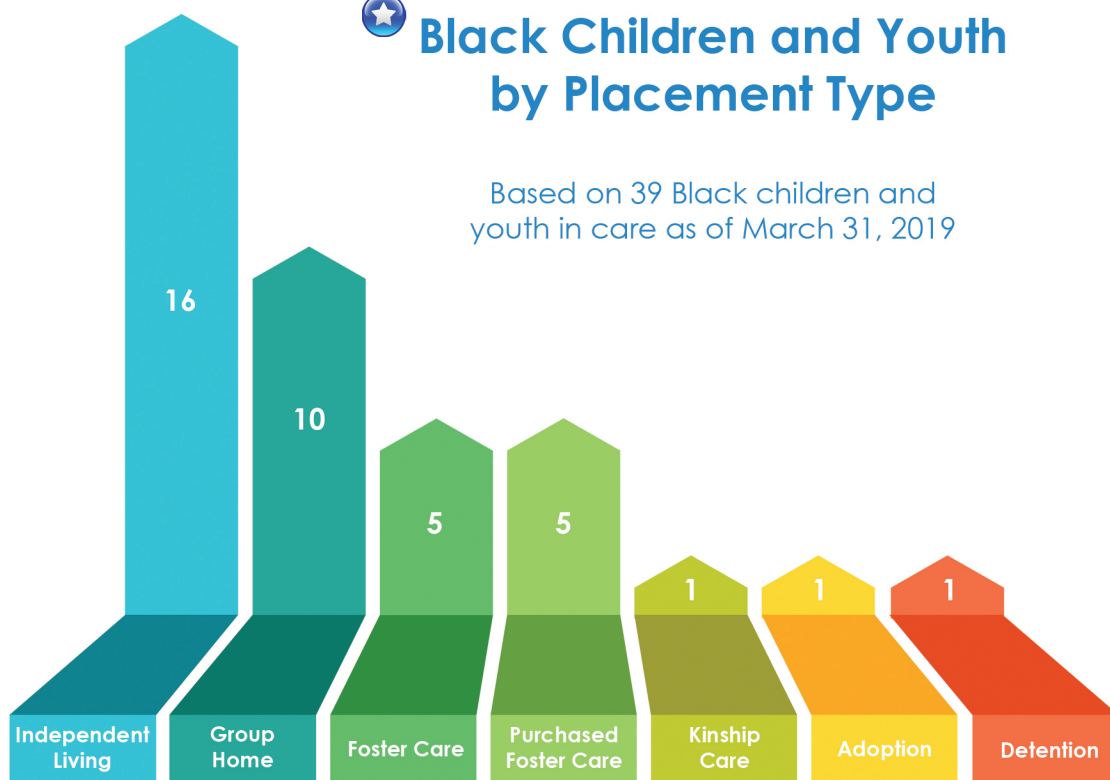


## Main Referral Sources Involving Black Children



## Black Children and Youth by Placement Type

Based on 39 Black children and youth in care as of March 31, 2019



Service data/percentages calculated based on data collected between April 1, 2018 - March 31, 2019

 indicates a new statistic for 2019 Building Bridges Consultation