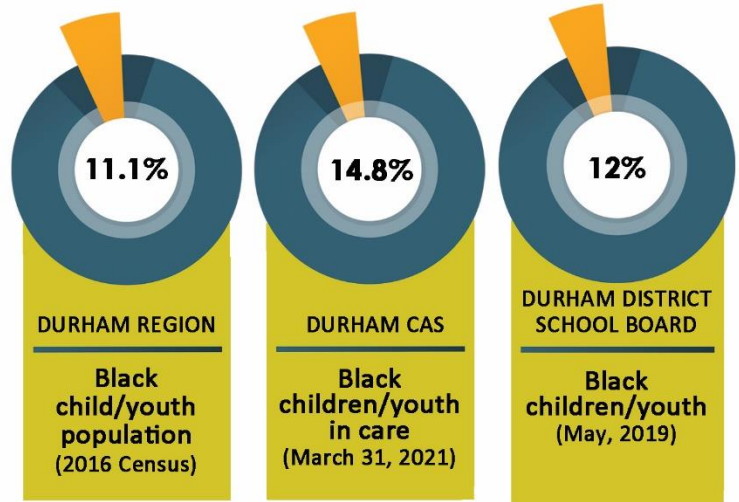


Percentages based on families where racial identity is indicated.



### TOP 5 REASONS FOR SERVICE FOR ALL FAMILIES

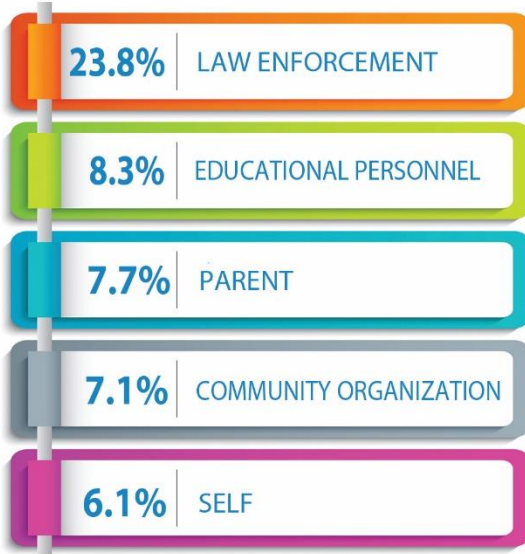
- 1 EMOTIONAL HARM / EXPOSURE
- 2 CAREGIVER CAPACITY
- 3 PHYSICAL / SEXUAL HARM BY COMMISSION
- 4 HARM BY OMISSION
- 5 PERSONAL INFORMATION

### TOP 5 REASONS FOR SERVICE FOR FAMILIES WITH BLACK CHILDREN

- 1 EMOTIONAL HARM / EXPOSURE
- 2 PHYSICAL / SEXUAL HARM BY COMMISSION
- 3 CAREGIVER CAPACITY
- 4 REQUEST FOR ASSISTANCE
- 5 HARM BY OMISSION

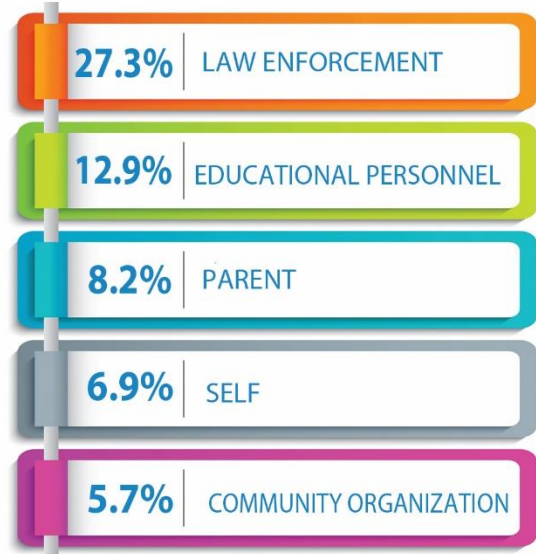


### MAIN REFERRAL SOURCES ALL FAMILIES



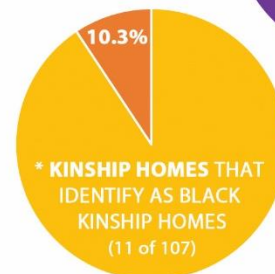
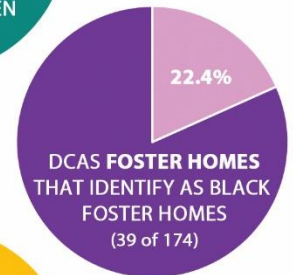
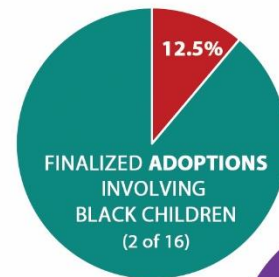
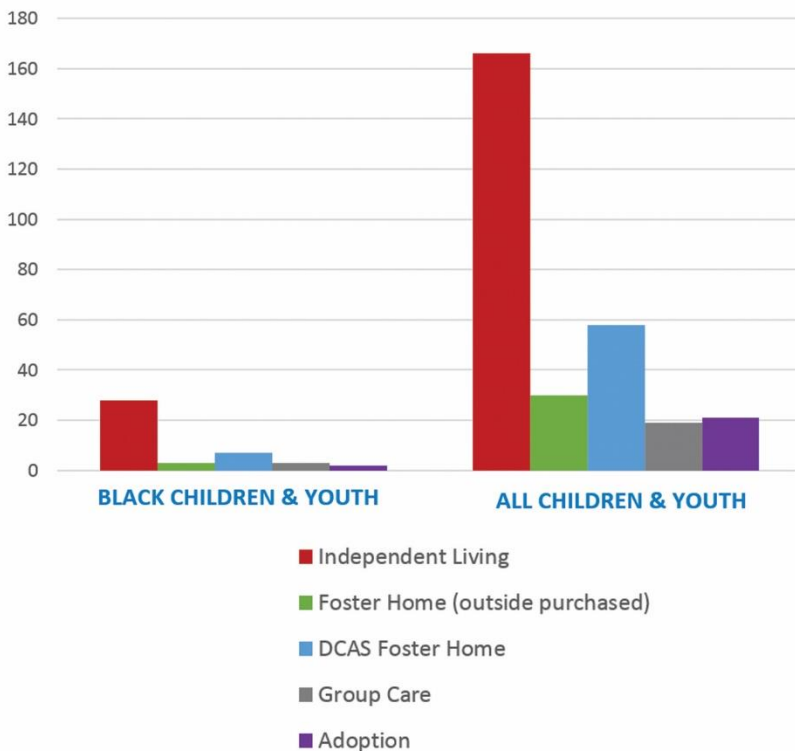
\* 14.33% OF REFERRAL SOURCES ARE N/A

### MAIN REFERRAL SOURCES INVOLVING BLACK CHILDREN



\* 11.1% OF REFERRAL SOURCES ARE N/A

### CHILDREN & YOUTH IN CARE BY PLACEMENT TYPE \* AS OF MARCH 31, 2021



\* REFERS TO KINSHIP CARE & KINSHIP SERVICE HOMES

\* AS OF MARCH 31, 2021