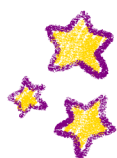




# Invest in the Future **Bursary Giving Opportunities**

Durham Children's Aid Foundation Donor Guide



**EmpowerED Futures Fund**



**DURHAM**  
Children's Aid Foundation

## The Power of Change

Education is one of the most powerful tools for breaking barriers and building a brighter future. Durham Children's Aid Foundation (DCAF) invites you to be part of a transformational initiative by funding bursaries for young people who have been in the care of Durham Children's Aid Society (DCAS). Your support will provide financial assistance for students pursuing post-secondary education, skilled trades, and professional training programs.

## Impact by the Numbers

- Only 46% of youth in care graduate high school by age 19, compared to 83% of their peers.
- Less than 10% of former youth in care pursue post-secondary education.
- The average university tuition in Canada is \$7,076 per year, excluding books, housing, and living expenses.
- Every \$1,000 in financial support increases the likelihood of degree completion by 14%.

## Ways to Give: Bursary Sponsorship Opportunities

### 1 Annual Bursary Pledge (Flexible, Recurring)

**Best for:** Individual & corporate donors who want to support a student on a yearly basis.

- Commit to funding a bursary for one or more students each year.
- Renew annually with no long-term obligation.
- Recognition options:
  - Annual donor listing,
  - impact report, student updates.

**Example:**

- \$5,000/year = One named bursary for a university student.
- \$3,000/year = Supports a student in trades or college.





## 2 **Named Multi-Year Bursary (Commitment-Based)**

**Best for:** Donors who want to support a student's full academic journey (e.g., a 2-4 year program).

- Commit to funding a bursary for multiple years (e.g., \$5,000/year for 4 years).
- Option for a named bursary with specific eligibility criteria (e.g., STEM, trades, arts).
- Receive annual impact reports and connect with student success stories.

## 3 **Endowed Bursary (Permanent Fund)**

**Best for:** High-net-worth donors, estates, or corporations looking for a long-term impact.

- Requires a minimum donation of \$25,000.
- Funds are invested, and only the annual interest is used for bursary awards.
- Ensures bursary funding in perpetuity.
- Named bursaries can be created to honour a donor, family member, or corporate sponsor.



#### 4 Corporate Matching Bursary

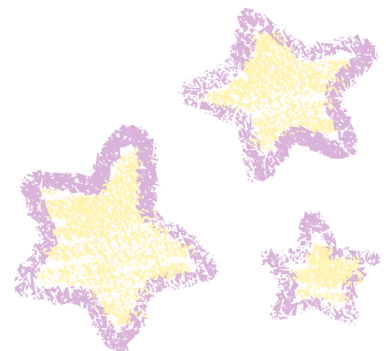
**Best for:** Businesses wanting to engage employees and maximize impact.

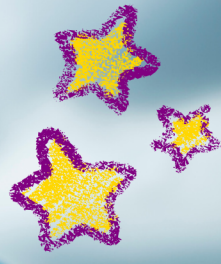
- Employees donate monthly or annually to a bursary fund.
- The company matches donations dollar-for-dollar.
- Provides a great Corporate Social Responsibility (CSR) opportunity.
- Employees can participate in selection or mentorship opportunities.

#### 5 Pay-It-Forward Alumni Bursary

**Best for:** Engaging former bursary recipients and alumni to support future students.

- Past bursary recipients commit to giving back once they are financially stable.
- Small, monthly recurring donations (\$10-\$50/month) sustain bursary funds.
- Creates a cycle of giving where former students support the next generation.





## 6 One-Time Giving Campaigns (Crowdfunding Style)

Best for: General donors, community supporters, and seasonal giving drives.

- Donors sponsor a bursary as a one-time gift.
- Targeted holiday giving campaigns or Giving Tuesday drives.
- Simple online donation platform with preset gift options (e.g., \$100 = books, \$500 = tuition help).

**Example:** “Sponsor a Student’s First Semester” – \$1,000 campaign for back-to-school season.

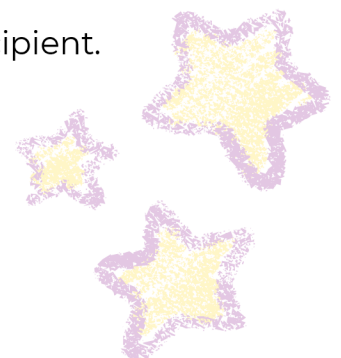
## 7 Bursary Subscription Model (“Sponsor a Student” Program)

**Best for:** Donors who want a personalized impact.

- Donors subscribe to a monthly giving plan that sponsors a student’s education.
- They receive personalized updates (letters, impact reports, student testimonials).
- Creates a personal connection between the donor and recipient.

**Example Tiers:**

- \$25/month = Supports school supplies.
- \$50/month = Covers books and transportation.
- \$100/month = Pays partial tuition.





## Donor Benefits & Recognition

As a valued bursary supporter, you will receive:

- ✓ Personalized impact reports showcasing student success stories.
- ✓ Opportunities to connect with students through letters or thank-you events.
- ✓ Recognition on our website, social media, and annual reports (optional).
- ✓ Exclusive updates on how your contribution is making a difference.

## How to Get Involved

Julie Van Hartingsveldt, CFRE, MA (she/hers)

Executive Director

905-433-1551 Ext. 2823

[julie.vanhartingsveldt@durhamcaf.ca](mailto:julie.vanhartingsveldt@durhamcaf.ca)

Together, we can break barriers and open doors for young people in Durham.  
Thank you for making dreams possible!

## Durham Children's Aid Foundation

"Together We Thrive."

